



# ELIZAVETA

6 900 000 EUR EX. VAT

Length: 40.65 m

Beam: 8 m

Cabins: 4

Guests: 8

41m ELIZAVETA was delivered in 2011 by Italian builder AB Yachts as part of its AB 140 series and has been carefully maintained ever since. In May 2025, the shipyard jobs were completed.

## Overview

|             |              |
|-------------|--------------|
| Yacht Type: | Motor Yacht  |
| Builder:    | AB Yachts    |
| Location:   | Ibiza, Spain |
| Year:       | 2011         |

## Accommodation

|         |                |
|---------|----------------|
| Guests: | 8              |
| Cabins: | 4 + 4 for crew |
| Crew:   | 7              |

## Dimensions

|                |                       |
|----------------|-----------------------|
| Lenght:        | 40.65 m - 138 ft 5 in |
| Beam:          | 8 m - 26 ft 3 in      |
| Draft:         | 1.3 m - 4 ft 3 in     |
| Displacement:  | 185 tonns (full load) |
| Gross Tonnage: | 290 GT                |

## Capacities

|              |          |
|--------------|----------|
| Fresh water: | 4 000 L  |
| Black water: | 5 500 L  |
| Fuel:        | 20 840 L |

## Main machinery

|                   |                               |
|-------------------|-------------------------------|
| Engines:          | 3 x MTU16V2000 M93<br>2400 hp |
| Engine hours:     | 1670 & 1670 & 1330 hrs        |
| Generators:       | 2 x Onan 50 kW 400 V          |
| Generators hours: | 7500 & 7000 hrs               |

## Performance

|             |          |
|-------------|----------|
| Max. speed: | 38 knots |
|-------------|----------|



# OVERVIEW

ELIZAVETA reaches 38 knots of maximum speed thanks to three engines coupled with three waterjets. The yacht comes complete with a Williams 505 tender and Yamaha 300hp jetski.

The deep-V-planing hull and superstructure are constructed using a mix of advanced materials, including carbon fiber and Kevlar. This provides the yacht with impressive strength and weight savings, ensuring optimal performance and stability even at high speeds.

As an open-style yacht, the ELIZAVETA places a strong emphasis on alfresco spaces and sunning areas. This design philosophy is perfect for those who love to entertain, as the yacht's expansive deck areas can easily accommodate large gatherings and parties.

The interior is a sight to behold, with abundant use of black and gold tones that create a sense of opulence and sophistication. Warm, dark woods such as walnut and olive are used throughout the yacht, accentuating the luxurious atmosphere. ELIZAVETA features four elegantly appointed staterooms, which can comfortably accommodate 8 guests. She is also capable of carrying up to 7 crew onboard to ensure a relaxed luxury yacht experience.

## Completed shipyard jobs (May 2025):

- \*A complete overhaul of MJP jets
- \*New and better shaft seals
- \*4 new a/c pumps
- \*New heaters
- \*Paint jobs
- \*New platform teak
- \*2 new stern winches
- \*New upholstery on the tender





# EQUIPMENT

HULL TYPE: "V" PLANING WITH LONGITUDINAL SPRAY RAILS

CONSTRUCTION MATERIAL: CARBON + KEVLAR

- ENGINE 3 x MTU - 1 6V 2000 M93 1.790 KW A
- 2.450 GIRI/MIN
- GEAR BOX INVERTER 3 x ZF 3060 RATIO 2.750/1
- PROPULSION 3 X WATERJET MJP 650 DD
- ELECTRIC GENERATOR 2 X ONAN 50 KW 400 V 50 Hz THREE PHASE
- AUTOCLAVE PUMP FRESH WATER 1 X GIANNESCHI JET 51 B 400 V CC
- FIRE FIGHTING PUMP 1 X GIANNESCHI 501 BT
- BILGE IMMERSION ELECTRIC PUMP 7 x RULEMATIC 2000 24 V DC
- BILGE IMMERSION ELECTRIC PUMP 7 x RULEMATIC 4000 24 V DC
- CENTRALIZED BILGE ELECTRIC PUMP 1 X GIANNESCHI ACM 501 BT K3
- 230 V DC THREE PHASE
- BILGE AND FIRE EMERG. MOTOR PUMP 1 x GIANNESCHI M ACM 501 BT
- FUEL OIL TRANSFER ELECTRIC PUMP 1 X GIANNESCHI CP 32 A 230 V AC
- THREE PHASE
- MANUAL FUEL PUMP 1 X SUPERLARIO 2B
- BLACK WATER MINCING PUMP 1 X HAMANN
- MARPOL PUMP 1 X GIANNESCHI CP 32 N B
- SANISPLIT 8 x 220 TECMA
- BOILER 2 X 100 LT - 230 V AC
- A/C SYSTEM 1 X CONDARIA
- WATER MAKER 2 x IDROMAR MC3 180 LT/H TYPE DUPLEX
- BILGE SEPARATOR 1 X FACET
- FUEL PURIFIER 1 X ALFA LAVAL
- M M . EE. STARTER 1 X MASTERVOLT
- BATTERY CHARGER 24/50-2
- SERVICE BATTERY CHARGER 1 X MASTERVOLT 24/100
- RADIO BATTERY CHARGER 1 X IVO SMART 24/10
- MTU BATTERY CHARGER 1 X MASTERVOLT 24/25-2
- GEN. BATTERY CHARGER 1 X IVO SMART 1 2/1 5
- EME. BATTERY CHARGER 1 X MASTERVOLT 24/50-2
- INVERTER 1 X MASS SINE 24/2500



## EQUIPMENT

STBD M . E. BATTERY STARTER 4 X EXIDE NG G 210

SERVICE BATTERY 12 X EXIDE G 210

RADIO STATION BATTERY 2 X EXIDE G 80 12 V - 80 AH

EMERGENCY LIGHTS 4 X EXIDE G140 12 V - 143 AH

MTU ELECTRONICS BATTERY 2 X EXIDE G 140

DD / GG BATTERY 2 x EXIDE G 140 12 V - 143 AH

MOTOR PUMP BATTERY 1 X EXIDE G 60

ANCHOR 2 X POSIDONIA 125 KG

ANCHOR CHAIN 125 MT CALIBRO 16 MM

WINDLASS ERCOLE 7.5 KW 220 V AC - 3F

CAPSTAN 2 X LOFRANS' 5.0 KW 220 V AC

ENGINE ROOM ELECTRIC VENTILATOR 2 X GIANNESCHI 230 V ELL AP  
636/8/45

ENGINE ROOM ELECTRIC EXTRACTOR 2 X GIANNESCHI 230 V ELL APV  
459/8/45

ENGINES WATER FUEL SEPARATOR PRE-FILTERS 3 x MTU

GENERATORS WATER FUEL SEPARATOR PRE-FILTERS 2 X RACOR 500 FG

MULTIFUNCTION HYDRAULIC POWER UNIT MORSAVERIO

GANGWAY HYDRAULIC POWER UNIT MORSAVERIO

INTRUDER HYDRAULIC POWER UNIT HUMPHREE

BOW THRUSTER SYSTEM HYDRAULIC POWER UNIT BCS

PROPULSION CONTROL ELECTRONIC SYSTEM MTU BLUE LINE

SELF INFLATABLE LIFE RAFTS 4 x EUROVINIL SOLAS FOR 10 PERSON









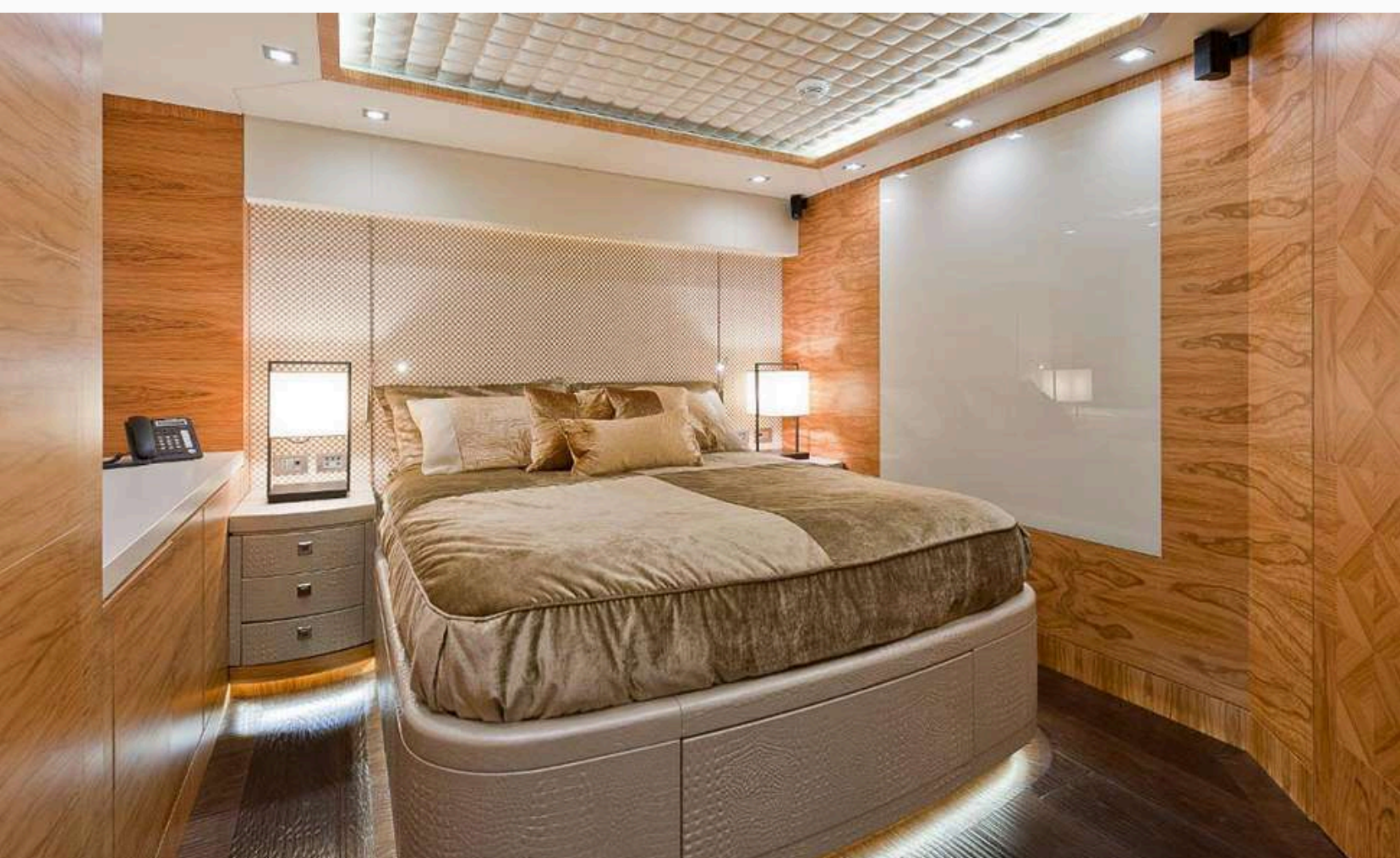










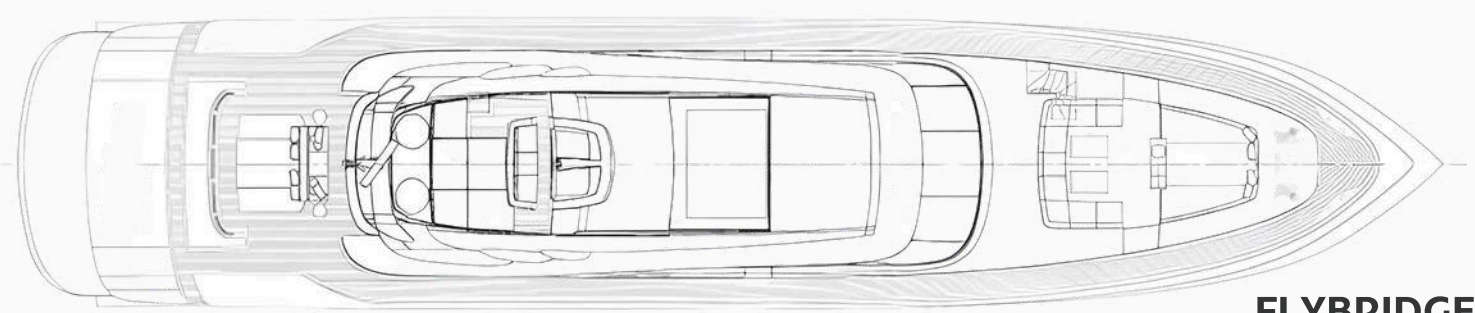




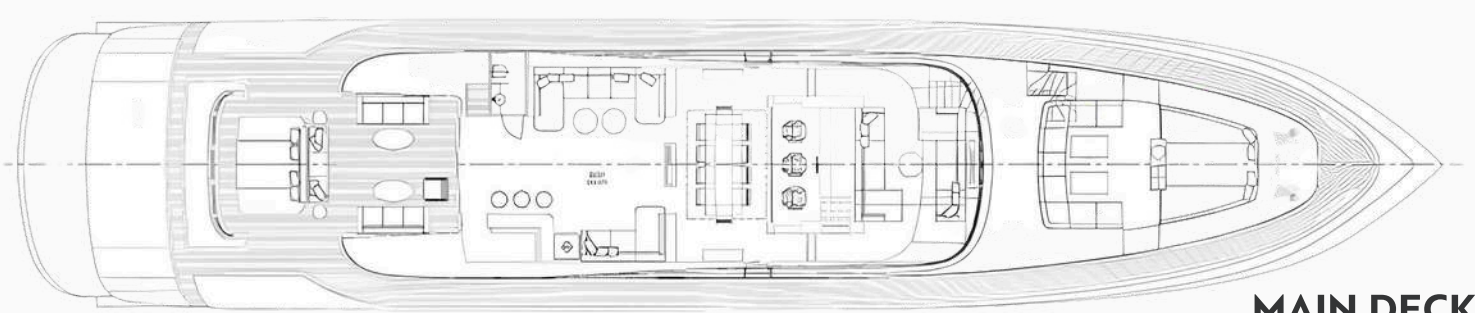




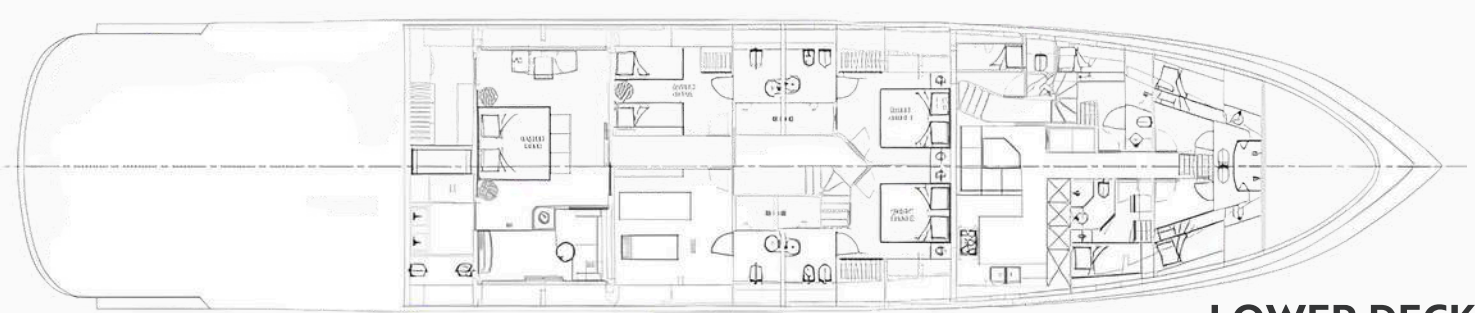
# LAYOUT



**FLYBRIDGE**



**MAIN DECK**



**LOWER DECK**

This document is not contractual. Any information provided by the company on their website, brochure and any other related documentation is provided in good faith and offered for information purposed only and the company do not make any representation, warrant or assume any legal liability or responsibility whatsoever, express or implied, for the accuracy, adequacy, validity, reliability, availability, completeness or usefulness of any information and/or images displayed. Yacht inventory, sales and / or charter prices, and any other specifications are subject to changes at any time without prior notice. None of the text and/or image used in this brochure may be reproduced without written consent from the company