



HELGA

5 850 000 EUR

Length: 27.3 m Beam: 6.25 m Cabins: 4 Guests: 8

27.3m Helga, delivered in 2021 by Van der Valk, is a remarkable yacht in excellent condition. Boasting extensive custom specifications and low engine hours, she has been privately used for just two seasons. Her interior and exterior are designed by Guido de Groot Design

Overview

Builder:	Van der Valk
Year:	2021
Location:	Sanremo, Italy
Hull:	Aluminium
Superstructure:	Aluminium
Interior Design:	Guido de Groot Design
Exterior Design:	Guido de Groot Design

Dimensions

Length:	27.3 m
Beam:	6.25 m
Draft:	1.8 m
Displacement:	73 tons
Gross Tonnage:	129 GT

Main machinery

Engines:	2 x MTU 12V2000M96L
Engine hours:	721 hrs
Generators:	2 x 26kW Northern Lights
Generators hours:	1107 hrs

Accommodation

Guests:	8
Cabins:	4 + 2 for crew
Crew:	3
Heads:	5

Performance

Max. speed:	27 kn
Cruising speed:	23 kn

Capacities

Fresh water:	1 900 l
Grey water:	2 000 l
Fuel:	8 500 l



OVERVIEW

Helga’s aluminium hull and superstructure, combined with a gyroscopic stabilizing system, ensure a smooth experience on the water. Her hydraulic swimming platform enhances onboard convenience, while floor heating and ceiling heating aft make her suitable for year-round use.

Helga's light blue hull contrasts with the sleek white superstructure. The teak decking adds a touch of timeless elegance and durability. Helga also features a spacious cockpit, comfortably seating 8 guests, perfect for social gatherings. Her design incorporates infrared heaters, making her ideal for colder climates.

The forward section of Helga features tiered seating, enhancing the social atmosphere and offering clear views of the surroundings. Additionally, her tall side walls add an extra layer of safety and security for all guests onboard. Her flybridge is a key highlight, featuring modular furniture, a bar area, a variety of seating options, and a crane for launching water toys.

Inside, Helga’s interior exudes understated luxury. Bleached oak wood and white matte finishes create a calm and modern ambiance, while movable furniture and a pop-up TV provide versatility in the main lounge area. The wheelhouse has direct access to the flybridge.

With accommodations for up to 8 guests in 4 suites, Helga offers a comfortable and luxurious space. The lower deck houses a large master stateroom with a desk and a seating area, a VIP cabin forward, a twin cabin, and a cabin with bunk bed. Each cabin is accompanied by an en-suite bathroom.

Powered by twin MTU engines, she cruises effortlessly at 23 knots, reaching a top speed of 27 knots.



EQUIPMENT

CONSTRUCTION STANDARDS

The vessel is built in accordance with the MCA-MGN-280 “Vessel operating category 2”

PROPULSION AND STEERING SYSTEM

Engines - 2 x MTU model 12V2000M96L, 12 cilindres, 1 432 kw, 1920 hp at 2 450 rpm
MTU «blue vision» engine control includes:

- 1 x Main helmstation steering position MTU «blue vision» engine control
- 1 x Flybridge steering position MTU «blue vision» engine control
- Remote control MTU (wired) used for docking (mobile docking station) with a connection at the cockpit
- Hydraulic bow-thruster (force 45hp Hydrosta)
- Stern thruster (force 35hp Hydrosta)
- Hydraulic trim system (Hydrosta)

GENERAL EXTERIOR

Full Aluminium Hull & Superstructure (special seaworthy shipbuilding Aluminium (AlMg4,5 Mn - H321/H111), with certificate)

GENERAL EXTERIOR

Full 15 mm solid teak decks, also on stairs (incl. the flybridge), swimming platform and flybridge. All steps have built-in LED-lights.

Front deck with seating and sunbathing area. Stairs to sunbathing area are covered with teak steps, stainless design strips and black gloss paint

Stainless steel (AISI 316) handrails

Arch-shaped mast on the flybridge

Opacmare electric curved (AISI 316) stainless steel saloon/cockpit sliding doors, incl. double glazed grey tinted security glass.

Grey tinted double-glazed & hardened security glass windows

Stainless steel (AISI 316) portholes with fly-screens

Stairs to swimming platform secured by stainless steel doors (AISI 316) with logotype of shipyard.

Outside tables in glossy finished teak wood

Opacmare electrical side door (starboard).

Opacmare companion way door (pilothouse to flybridge)

- 1 x Stainless steel side (AISI 316) stepladder. Gates (bulwark doors) to the pier on portside and starboard

EQUIPMENT

GENERAL EXTERIOR

8 x Stainless steel (AISI 316) cleats
[4x2] front and aft, plus 3x2 cleats mid ship
2 x Stainless steel (AISI 316) bollards on swimming platform

HIP SYSTEMS & COMPONENTS (EXTERIOR)

Flybridge:
Fridge
Wash basin (cold and hot water)
Music system
Cover/Hatch over entrance to flybridge with stainless steel (AISI 316) frame and handle on inside that can be used as safety handle
Hydraulic Crane for tender boat («Steelhead» ES1000 / 450 kg lifting capacity)

GENERAL (INTERIOR)

The entire ship professional thermo- and sounddamping isolation (Rockwool). All materials are used in accordance with the requirements of “RINA”, “Bureau Veritas” and “Lloyds Register”.
Noise level in the Master Cabin not exceeding 45 dB when 1 generator is running in the Engine Room.
All the wooden surfaces of the interior are covered with protective varnish (gloss finish).
Corian worktops in galley and bathrooms.
Corian and ceramic shower cabins and bathroom/toilet walls.
Solid wooden floors (decks, corridors, cabins, toilets and bathrooms). • Teak floor inserts 15 mm (with supports in the center) and seats in showers.
Mattresses of the beds in guest cabins with dimensions 900 x 2000 mm, Master cabin – 2000 x 2000 mm.
Electric blinds at all areas (control by buttons at the walls at the cabins and by the remote control at the saloon and master cabin) with the exception of bathrooms.

GENERAL (INTERIOR)

Escape hatches/exits

SHIPS SYSTEMS AND COMPONENTS (INTERIOR)

Fire extinguishing system
Automatic fire extinguishing system in the engine room (Firepro Automatical aerosol Marine Fire Extinguisher D118) as well as underneath the steering position plus additional manual fire extinguishers (the number and capacity depend on the classification demands).
Manual fire extinguishers (the number and capacity depend on classification demands)
10 x 6 L Foam extinguisher, (MCA approved)
Engine room ventilation system
High quality electric steering chair with complete electric adjustments, with armrests and footrest (Recaro)
Onboard intercom system (8 locations)
cabins (4 pc.)
wheelhouse (1 pc.);
flybridge (1 pc.);
Salon (1 pc.);
crew cabin (1 pc.) and network switch (1 pc.)
Moving sliding beds in one of the guest cabins
Documents safe in Master (1 pc) and crew cabin (1 pc) with digital lock.
High quality sanitary equipment, incl. toilet and bathroom accessories («Hans Grohe»)

DECK EQUIPMENT
Lighting system
1x Searchlight Double Halogen (Jabsco 255SL RC).
6 x Underwater lights «Sea Vision» LED RGB.
Notification system
1 x Double-horned air horn (Kahlenberg D-OA).
1 x Loudhailer Raymarine Ray240E, mounted on the radar mast (arch)

EQUIPMENT

DECK EQUIPMENT

Notification system

1 x Loudhailer Raymarine Ray240E, mounted on the radar mast (arch)
3 x Double-arm windscreen wipers with adjustable interval and sprayers («Speich»).

Winches

2 x Electric anchor winch (MAXWELL model 6000 VWCLP 100TDC 24V 3.500W) with 150 kg stainless steel anchor and 150 m (13 mm) stainless steel anchor chain and anchor roll.

2 x MAXWELL electric capstan/winch in cockpit area (MAXWELL 3500VC 24V 190TDC tall drum).
2 x Anchor chain counter at both control stations (wheelhouse and flybridge).

1 x Hydraulic gangway in box («Opacmare» 1103/58), unfolded length is 5 800 mm.

The gangway will reach 1.8m behind the hydraulic swim platform «Opacmare» hydraulic lower able swim platform (gross cap. 1.000 kg) with 2 removable U-shaped safety railings.

Opacmare 3220E/16 Automatic retractable swim ladder integrated in the fixed part of the swim platform (5 steps).

Deck and equipment wash system. Carbon yacht shower (hot & cold water) with fixed part of the platform integration adapter.

3 x Infrared heater unit cockpit deck. Ship’s bell on bow area.

The name of the vessel is made of stainless steel AISI

AIRCO SYSTEM

“Clion Marine” Full auto-reverse tropical air-conditioning system (Delta T: 15 degrees Centigrade’s) with chillers in engine room. Per area separately adjustable.

HEATING SYSTEM

Diesel heater («Kabola» KB75 combi) - for heating and hot water system, productivity 11 l/min with the water 90 degrees Celsius.
Floor heating throughout the ship (each area and cabin separately adjustable).
Boiler 120 litre (circulation system).

FRESH WATER SYSTEM

Water maker «Sea Recovery» Aquamatic 1800-2, productivity 284 l/hour.
Drinking water disinfection system (HP water systems UV-5000 steriliser).
Water-pump (Gianesshi JET 4B C.E. water pressure system), incl. back-up pump including filters.
PE water tank (1900 l).

WASTE WATER SYSTEM

Grey/Black water pump («Gianesshi» WASTE PUMP MV 44G 24V / 50 l/min) incl. back-up pump.
Shower pumps («Planus Aqualift»).
Electric toilets/bidets («Planus»).
Toilet paper can be thrown.
3-way valve for shower / sinks of all the cabins, galley and flybridge / wash and dishwasher machines) water over board.
PE waste water tank (2000 l) with extracting possibility and overflow security, incl. tank level meter.

BILGE SYSTEM

4 x «Jabsco» 3500 automatic bilge pump (14.000 l/h) with signaling.
1 x «Jabsco» «Ocean Warrior» manual bilge pump.

MISCELLANEOUS

1 x Central vacuum cleaning system («Beam» Central 220 V).

EQUIPMENT

MISCELLANEOUS

1 x Piston single-cylinder compressor with 25L expansion barrel, installed in engine room («Creemers Mobiel 240-25» 8 bar).

1 x Tender «Williams» Sportjet 395.

Accessories for the tender:

- LED deck lights (4 pc)
- Teak deck (synthetic)
- VHF – Raymarine 52
- Fusion Music system Bluetooth
- Overall cover
- White cradles
- Tie downs (2 pc)
- Lifting strops
- Stainless steel anchor with line

1 x box (platform) for storing at the engine room.

APPLIANCES “MIELE”

SUNBLINDS AND SOFT TOPS

Covers (acrylic, tarpaulin) for all outside seats / sun loungers and barbecue / grill, control panel at the flybridge, tables at the bow, at cockpit and flybridge.

Soft top (Canvas) bimini with dust cover on flybridge.

Sunscreen aft-deck sofa.

Cockpit tent with windows aft deck.

Covers on glazing of the main deck.

Wind screen cover wheelhouse (3 front windows, 1 window SB, 1 window PS).

2 x Yachting Line Girasole evolution Multivalvola umbrellas 3 000mm diameter with AISI 316 pillar. 2 x deck adapters to be included, and 2 on the fixed swim platform.

ELECTRIC SYSTEMS & COMPONENTS

Vessel monitoring, control and digital switching system (iPad compatible)

GENERATORS

2 x «Northern Lights» sound damped 1500 rpm 26 kW 400 Volt AC (3-phase).

ELECTRIC SYSTEMS & COMPONENTS

GENERATORS

Special cover system aimed to surpass sound and vibration from generator. Includes the cover and special platform.

BATTERY SETS

2 x 24 Volt 1000 amp (2 volt cells for general use/operation (service batteries)).

4 x 24 Volt 160 amp type AGM (for main engines).

2 x 12 Volt 90 amp type AGM (for generators).

CHARGERS

2 x Mastervolt 24V 100 amp. (for service batteries).

1 x Mastervolt 24V 60 amp. (for engine batteries).

2 x Mastervolt 12 V 10 amp (for genset batteries).

INVERTER

2 x 4 kW inverter 24/230 Volt.

SHORE POWER CONNECTION

1 x 400 volt 32 amp with isolation transformer.

1 x 230 volt 32 amp shore connection for chargers in case 400 volt is not available.

SWITCH PANELS 230 VOLT

Switch panels have been equipped with “double pole” fuses and where necessary “earth fault” and “engine protection systems”. The switching between shore, generators and inverter is fully automatic and “fool proof”. • A 230 V indication - monitoring system is mounted in the steering position.

SWITCH PANELS 24 VOLT

A main switchboard is mounted in the engine room en is equipped with “double pole” fuses and where necessary engine security switches. Also a professional “earth fault” monitoring system is installed.

EQUIPMENT

ELECTRIC SYSTEMS & COMPONENTS

SWITCH PANELS 24 VOLT

A 24 volt dc indication & monitoring system is installed in the steering position.

ELECTROLYSIS

The ship is equipped with an earth fault measuring system equipped with alarm function. Should the ship find itself in an “electrically polluted” environment then the system will indicate this.

DASHBOARD WHEELHOUSE

Equipment flush mounted & equipped with foil panels.
Enough visibility between top of dashboard and front windows.

CABLE SYSTEM

Type cables and installation according to latest classification demands. Only professional connectors have been used. Cables are heat resistant and have separate fuses.

ENTERTAINMENT SYSTEM

1 x Satellite TV System KVH TracVision TV6.

SALON

1 x Samsung 55” Led TV with integrated satellite receiver +DVB-T.
1 x Marantz ST8012 receiver.
4 x Bower & Wilkins CCM682 marine speakers.

MASTER CABIN

1 x Samsung 42” Led TV with integrated satellite receiver + DVB-T.
1 x Marantz M-CR611 receiver.
4 x Bower & Wilkins CCM682 marine speakers.

OTHER CABINS

1 x Samsung 22» Led TV with integrated satellite receiver + DVB-T.
1 x Marantz M-CR611 receiver.
2 x Celo5 2-way marine speakers.

ENTERTAINMENT SYSTEM

FLYBRIDGE EXTENSION

4 x Bower & Wilkins CCM682 marine speakers.

AFT DECK EXTENSION

4 x Bower & Wilkins CCM682 marine speakers.

ALARM SYSTEM

“E-marine” alarm system with GPS-tracker & burglary alarm.

EXTERNAL COMMUNICATION

WHEELHOUSE

Autopilot consist of:
Raymarine Evolution Autopilot ACU-300.
Raymarine P70R Autopilot Control Head
Raymarine Axiom Series Glass Bridge, Raymarine’s consist of:
2x Raymarine Axiom XL 19” display’s.
Radar Raymarine Magnum consist of:
1x 4 ft open array scanner.
Receiver / Transmitter Raymarine AIS 950:
transmistter class A.
receiver class B

The Raymarine AXIOM E70363 navigation system, with the built-in RealVision 3D ™ sonar, the updated LightHouse 3 operational system and a high-performance 4-core processor. Equipped with a display “Raymarine AXIOM” 7 ”(2 pcs.).
2 x Raymarine’s fixed mount Ray90 modular VHF radio and 2 x handset A80289 “RayMic Wired Handset Accessory”

FLYBRIDGE

Autopilot consist of:
Raymarine P70R Autopilot Control Head
Raymarine Axiom Series Glass Bridge, Raymarine’s consist of:
2x Raymarine Axiom XL 16” display’s.

EQUIPMENT

EXTERNAL COMMUNICATION

FLYBRIDGE

1 x Raymarine’s fixed mount Ray90 modular VHF radio and 1 x handset A80289 “RayMic Wired Handset Accessory”.

CREW AREA

12” touch screen with plotter repeater, anchor & depth alarm plus tank levels.

12” touch screen with duplication of information from IP cameras.

IP CAMERAS SYSTEM

1 x Camera IP, for engine room.

1 x Camera IP, aft view.

1 x Camera IP, cockpit view.

1 x Camera IP, portside view.

1 x Camera IP, starboard view.

NIGHT VISION / THERMAL CAMERA

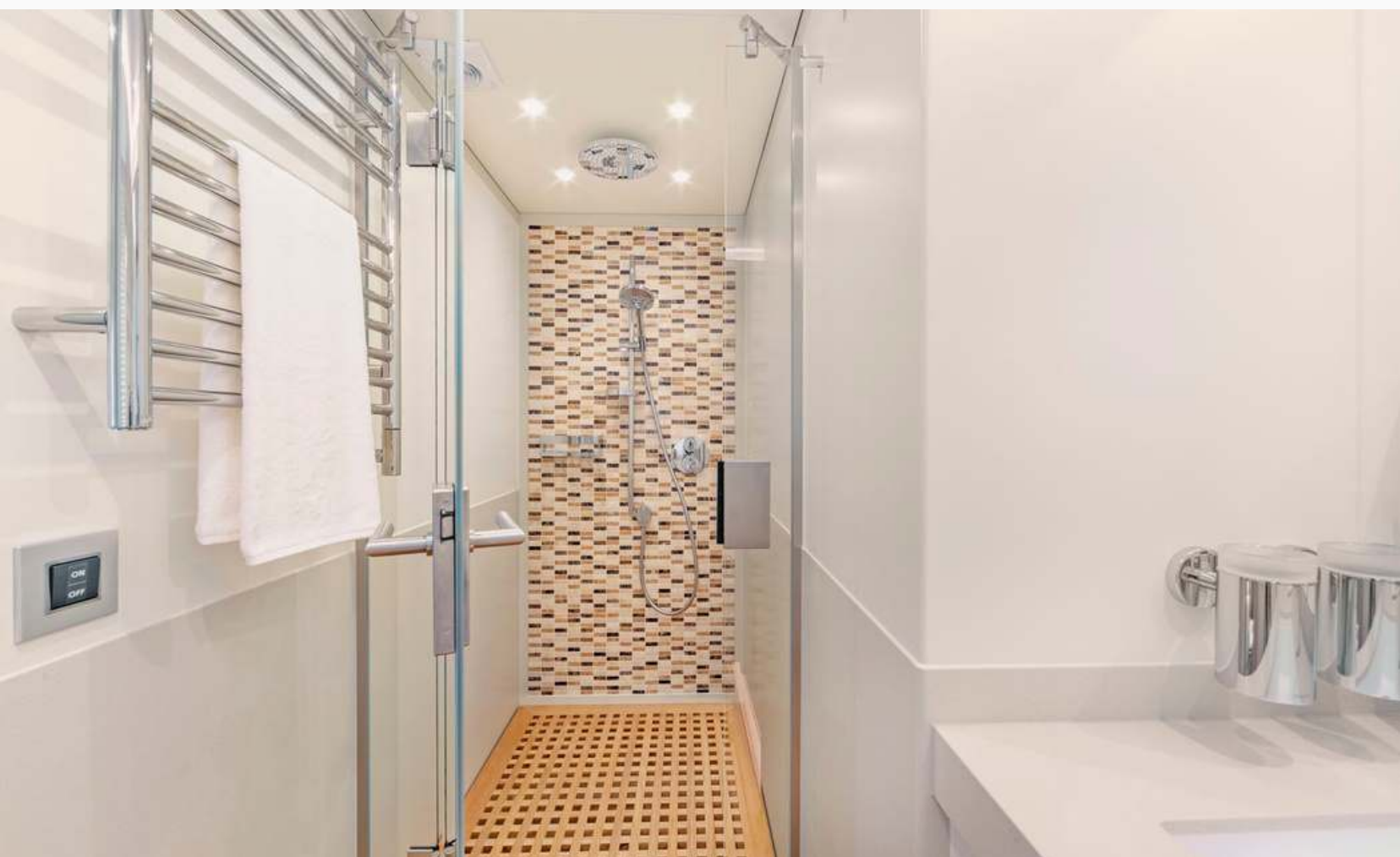
1 x FLIR M364C XR Premium Maritime Thermal Night Vision System.









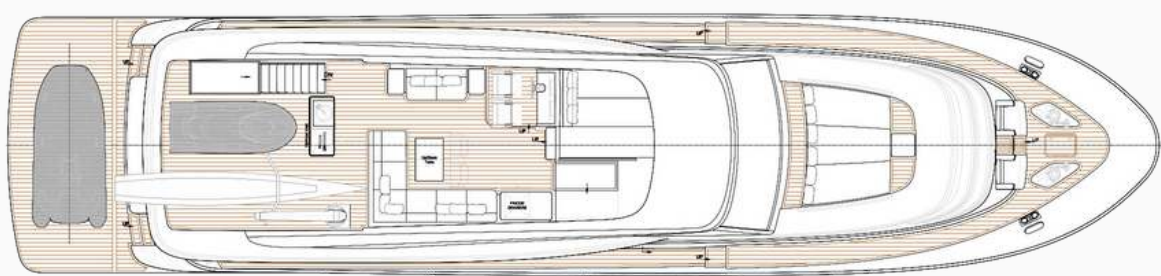




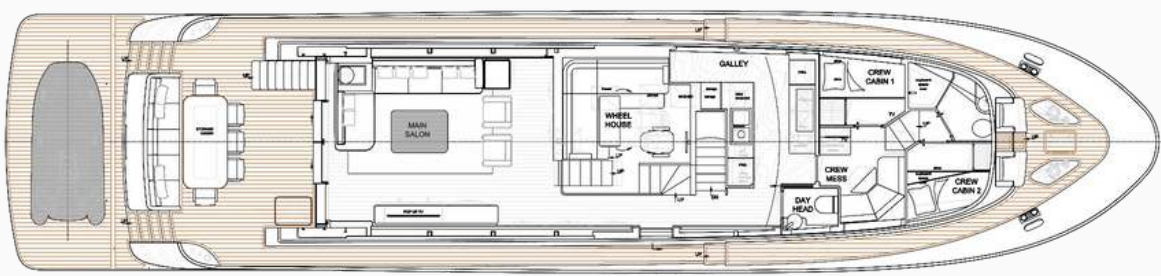




LAYOUT



FLYDECK



MAIN DECK



LOWER DECK

This document is not contractual. Any information provided by the company on their website, brochure and any other related documentation is provided in good faith and offered for information purposed only and the company do not make any representation, warrant or assume any legal liability or responsibility whatsoever, express or implied, for the accuracy, adequacy, validity, reliability, availability, completeness or usefulness of any information and/or images displayed. Yacht inventory, sales and / or charter prices, and any other specifications are subject to changes at any time without prior notice. None of the text and/or image used in this brochure may be reproduced without written consent from the company